

Volume Day Trader Assets for today's session:

CSAN, MRNA, KHC, PPLT, EPM, COTTON, FNGU, META, FET/USDT, COCOA FUTURES, BOEING [BA], AERGO/USDT, CORTEX/BTC

New Assets for today's session:

COMBO, BB/USDT

Watchlist:

N/A

Crypto Assets:

TAO, KOMA, TETSU/WRAPPED SOL

FX:

USD/PLN

Remember:

- **PTA - Potential Trading Area**
- **Moving Averages plotted on the charts: 21 and 50 (We rarely put averages on the chart just to see the market condition. our main guide is ALWAYS volume).**

Risk Management:

- **Position Building (Long Trades): NO SL (When building a position, we assume that we will buy the assets in several transactions, most often two or three transactions. The point is that we divide the capital allocated to a given stock into 2-3 parts. We build positions mainly on shares).**
- **R:R 1/3. We set the SL and want to achieve a return on risk of 3:1**
- **If you are trading in leveraged positions, ALWAYS use SL**

[CSAN]

LONG: 10.15

NO SL

1st entry: \$10.59 (29.05.2024)

2nd entry: \$10.15 (5.06.2024)

3rd entry: \$9.51 (14.06.2024)

4th entry: \$7.50 (22.11.2024)

Average entry: 9.43

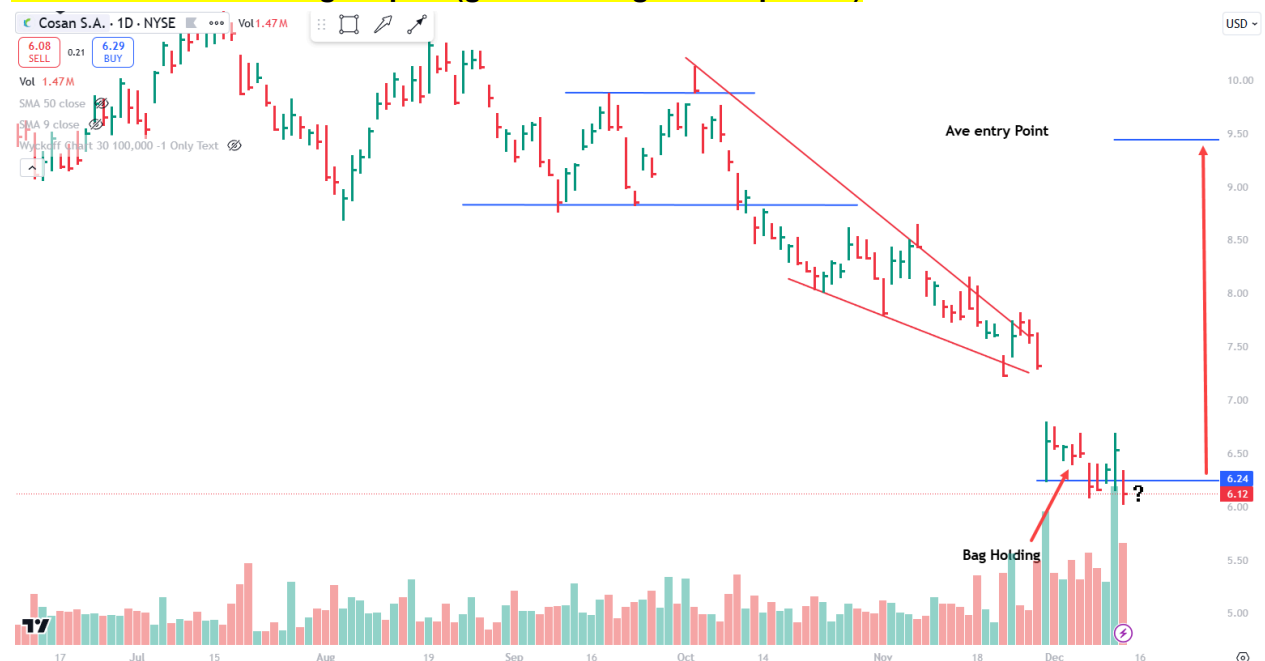
Target: 14:00

***2.12.2024 we have to change the target from 14 to AVE Entry Point: 9.43**

Bag holding Patterns in background

Dividend: 06.10.2024, Dividend Yield: 4.49%, Annual Dividend: 0.3469027

14.02.2025 - 4Q earnings report (good earnings are expected)



30 min chart



Long: [MRNA] 86,16

Initial plan: Entry Zone: 1st Entry 78.07- 75.63; 2nd Entry 62.55

Target: 140 / 160

[22.08.2024] We changed the plan: Entry on today's session opening / ½ of the capital allocated for this trade. Entry: 86.16

[30.08.2024] ¼ of the capital allocated for this trade. Entry: 77.75

[05.09.2024] ¼ of the capital allocated for this trade. Entry: 71.75

1st target: 100

2nd target: 140

3rd target: 160

This Asset is getting stronger and stronger!!! **This chart will explode soon!**

BAG HOLDING PATTERNS in Background! (daily chart)





[KHC]

LONG:

1st entry: 35,67 [04.09.2024]

2nd entry: 33,35 [04.09.2024]

3rd entry: 31,75 [22.11.2024]

Average Price: 33,25

Dividend: 29.11.2024, Cash amount: \$0,40, Declaration date: 30.10.2024

4th dividend this year!

NO STOP LOSS!



2h chart



Platinum ETF:

[PPLT]

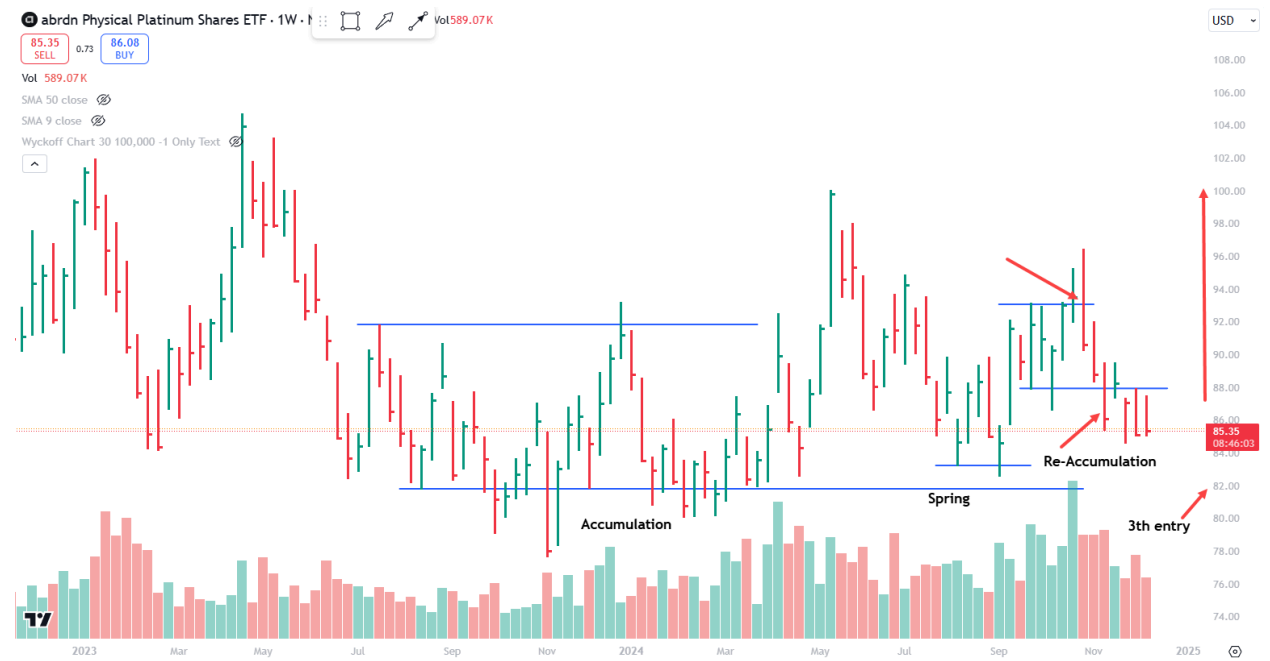
Long: Friday open price

Target: \$118

1st entry: \$93.24

2nd entry: 86.58

3rd entry: 82.00



[EPM]

Long: 6.05

Target: 8.50 or above

SL: 5.45

2nd PTA Signal for today session



[COTTON]

Long: Breakout

Still waiting for breakout on high volume



ETF [FNGU]:

Long: 515

SL: 591

Part profit taking



[META]

Long: breakout (high volume / 5/15 min chart)

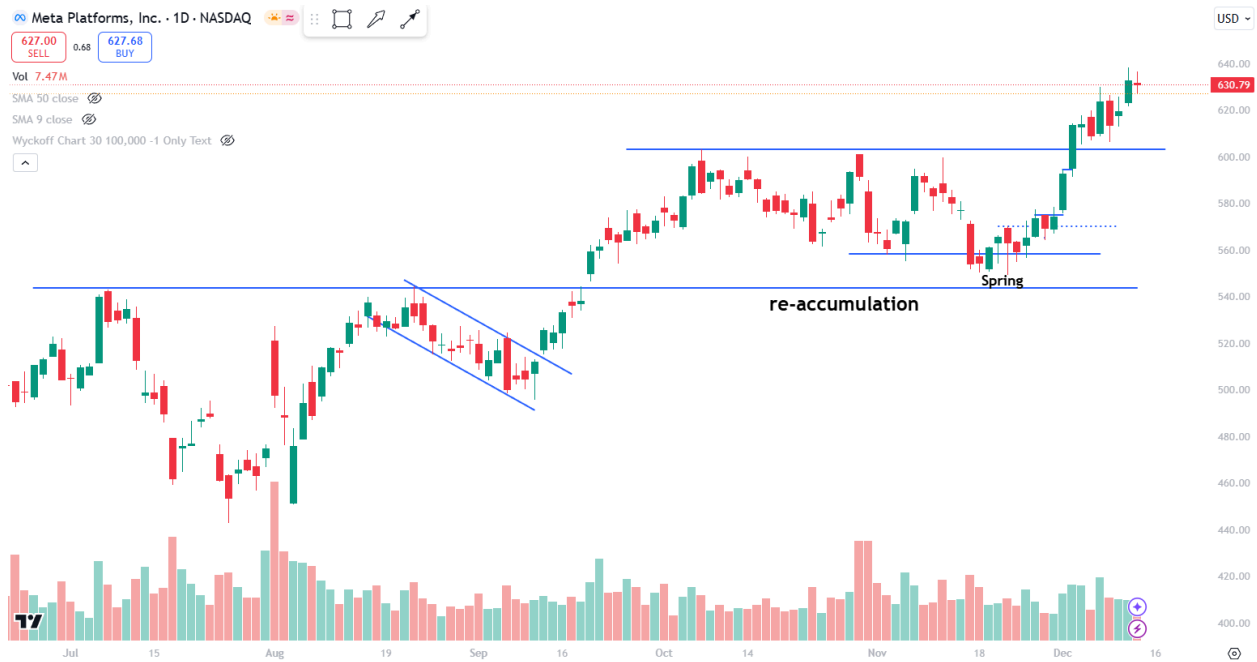
SI: 608

Target: 603,14 or higher

If you took all profit on 608 that's ok! Congrats.

If you still keep same position another SL: 620.50

High of this range was minimum target for 1st PTA / everything above is super bonus



FET/USDT

Long: 1.82

01.12.2024 As we expected yesterday before session starts - accumulation was drawn on a 15 min chart!

02.12.2024 Spring happened on 15 min chart as we speculate

SL: BEP or Higher of TP after 2:1 (depends at your greediness)

Already 3:1 achieved

Let's hunt for another Spring patterns



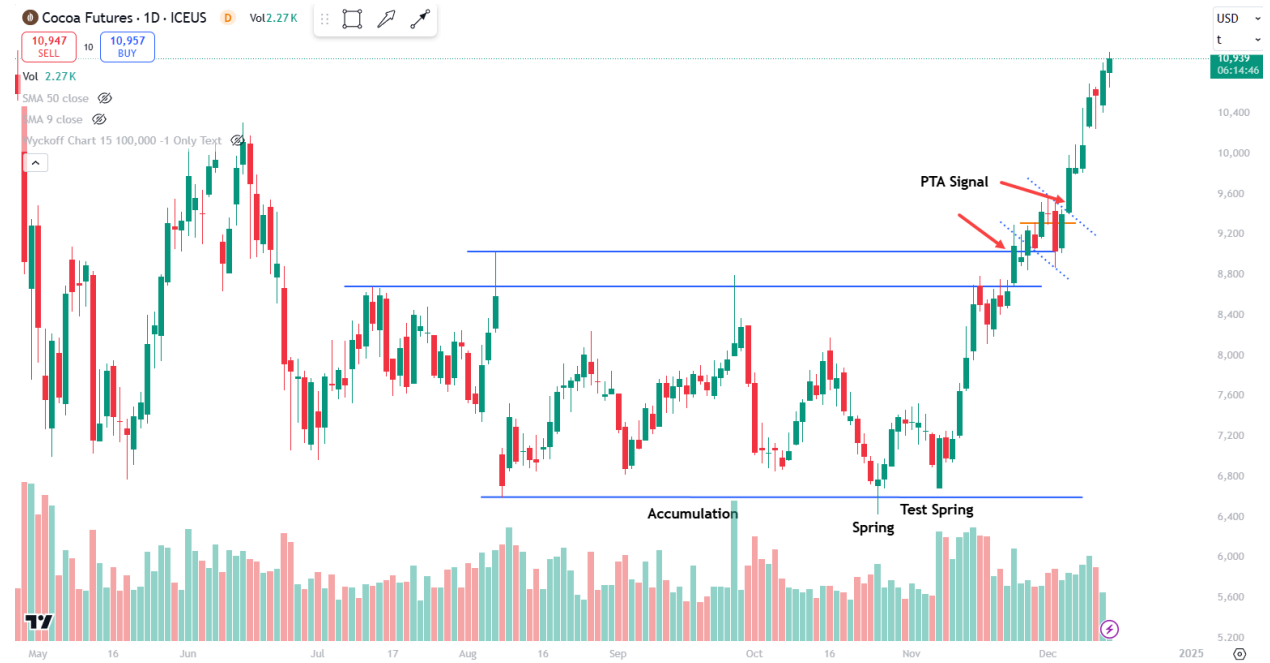
30 min Chart



Cocoa Futures

Full update:

<https://www.skool.com/volumedaytrader/cocoa-futures-accumulation-patterns-in-the-background>



BOEING [BA]

Long: PTA line or opening price

Target: 200

SL: 152

Video: Video:



Crypto:

[TAO]

LONG: Breakout level (accumulation in the background)



[KOMA]

LONG: 0,06594

I am putting Small speculation capital

NO SL

Profit: 200% !!



[TETSU/WRAPPED SOL]

LONG: 0,00003481

NO SL



Aerogo/USDT

Long



Cortex/BTC

Long



Forex:

[USD/PLN]

Long

2 targets already achieved!

3rd target achieved!

Condition has changed, Spring in the re-accumulation area 4,04

4.09 achieved

FX position should be closed on weekend



New Asset for Today:

Combo

Long



BB /USDT

Long



Please follow the updates here:

<https://www.skool.com/volumedaytrader?c=41f6b61f831a4240af5255fbee3cc&s=newest-cm&fl=>

**If signals do not meet the conditions for opening a position, we simply remove them from the watchlist.*

****Video commentary Available on Member's Panel****