

### Volume Day Trader Assets for today's session:

CSAN, MRNA, KHC, PPLT, EPM, COTTON, SBUX, FNGU, META, AFRM, SNOW, FET/USDT, DDOG

### New Assets for today's session:

APT, TAO, KOMA, LINK/USDT, TETSU/WAPPED SOL, MAXI, NOT, XRP

### Watchlist:

### Polish Stocks:

USD/PLN

### Remember:

- PTA - Potential Trading Area
- Moving Averages plotted on the charts: 21 and 50 (We rarely put averages on the chart just to see the market condition. our main guide is ALWAYS volume).

### Risk Management:

- Position Building (Long Trades): NO SL (When building a position, we assume that we will buy the assets in several transactions, most often two or three transactions. The point is that we divide the capital allocated to a given stock into 2-3 parts. We build positions mainly on shares).
- R:R 1/3. We set the SL and want to achieve a return on risk of 3:1
- If you are trading in leveraged positions, ALWAYS use SL

### [CSAN]

LONG: 10.15

NO SL

We divide the capital for this transaction into three parts. I am also considering entering at any convenient time between points 11.38 and 10.15. The target for this trade is around \$15

1st entry: \$10.59 (29.05.2024)

2nd entry: \$10.15 (5.06.2024)

3rd entry: \$9.51 (14.06.2024)

4th entry: \$7.50 (22.11.2024)

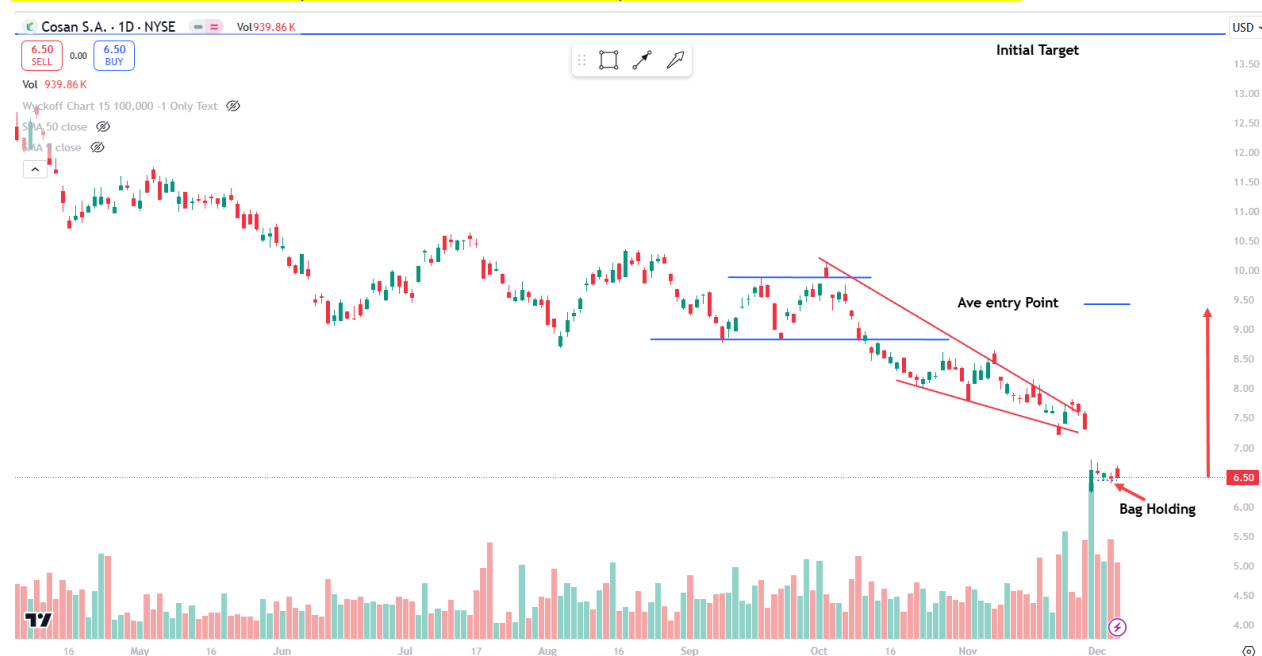
Average entry: 9.43

Target: 14:00

\*2.12.2024 we have to change the target from 14 to AVE Entry Point: 9.43

**Bag holding Patterns in background**

**Dividend: 06.10.2024, Dividend Yield: 4.49%, Annual Dividend: 0.3469027**





Long: [MRNA] 86,16

Initial plan: Entry Zone: 1st Entry 78.07- 75.63; 2nd Entry 62.55

Target: 140 / 160

[22.08.2024] We changed the plan: Entry on today's session opening / 1/2 of the capital allocated for this trade. Entry: 86.16

[30.08.2024] 1/4 of the capital allocated for this trade. Entry: 77.75

[05.09.2024] 1/4 of the capital allocated for this trade. Entry: 71.75

1st target: 100

2nd target: 140

3rd target: 160

This Asset is getting stronger and stronger!!! **This chart will explode soon!**

**BAG HOLDING PATTERNS in Background!**





[KHC]

LONG:

1st entry: 35,67 [04.09.2024]

2nd entry: 33,35 [04.09.2024]

3rd entry: 31,75 [22.11.2024]

Average Price: 33,25

Dividend: 29.11.2024, Cash amount: \$0,40, Declaration date: 30.10.2024

4th dividend this year!

NO STOP LOSS!



## Platinum ETF:

PPLT

Long: Friday open price

Target: \$118

1st entry: \$93.24

2nd entry: 86.58

3rd entry: 82.00



## [EPM]

Long: today open price

Target: 8.50 or above

SL: 5.45



# Cotton

Long: Breakout

Still waiting for breakout on high volume



# [SBUX]

Long: Breakout 101.47

SL: 99.50

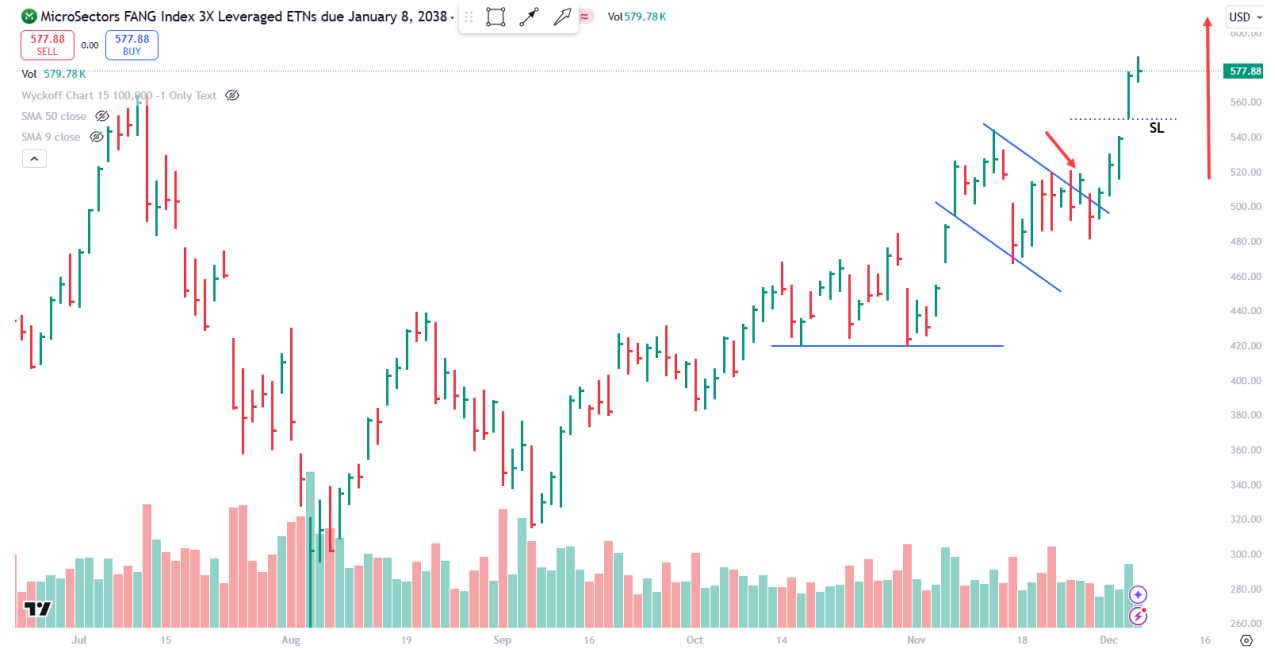
Stopped out on SL 99,50



# ETF [FNGU]:

Long: 515

SL: 550



# Meta

Long: breakout (high volume / 5/15 min chart)

SI: 604,50



## Affirm [AFRM]

Long: Breakout 68.50

SL: Tight or on BEP

Stop out with a little profit (coffee in Starbucks)



## SNOWFLAKE [SNOW]

1st. PTA Signal we post 26.09.2024

<https://www.skool.com/volumedaytrader/snowflakes-snow-bullish-patterns-buy-signal>

3rd PTA Signal is on our chart

Since the beginning of the session, the market has been rapidly raising prices, ending the session with a breakout on increased volume. Please note that the previous breakout attempts were unsuccessful and the breakout was made at the beginning of the session, after which prices fell below.

SL: BEP or aggressive around 178,35



## FET/USDT

Long: 1.82

01.12.2024 As we expected yesterday before session starts - accumulation was drawn on a 15 min chart!

02.12.2024 Spring happened on 15 min chart as we speculate

SL: BEP or Higher of TP after 2:1 (depends at your greedness)

Already 3:1 achieved

Tight SL min on 1:1 or 2:1 profit level and wait



## DDOG:

Bull Flag: GAP Opening

Long: GAP Open Price 157,87



## Crypto:

### APT/USDT

LONG: 14.11

SL: below breakout candle



### [TAO]

LONG: Breakout level (accumulation in the background)



## Yesterday 15 min Chart



## Today 15 min chart



## [KOMA]

LONG: 0,06594

I am putting Small speculation capital

NO SL



# LINK/USDT

Long: 23.82



# TETSU/WAPPED SOL

LONG: 0,00003481

NO SL



# Maximus [MAXI]

**LONG: 0,75-0,81 zone**  
**SL: 0,7000 or BEP**



# NOT/USDT

**Long: 0,009441**  
**SL: Below Spring or more aggressive 0,008700 or BEP**



**[XRP]**  
**LONG if market breakout PTA**



**Polish Stocks:**

**[USD/PLN]**

Long

2 targets already achieved!

3rd target achieved!

Condition has changed, waiting for 3,99 level accumulation patterns



***\*If signals do not meet the conditions for opening a position, we simply remove them from the watchlist.***

***\*\*Video commentary Available on Member's Panel\*\****