

Volume Day Trader Assets for today's session:

CSAN, MRNA, KHC, PPLT, EPM, COTTON, SBUX, FNGU, META, AFRM

New Assets for today's session:

SNOW

Watchlist:

FET/USDT

Polish Stocks:

BMC, USD/PLN

Remember:

- PTA - Potential Trading Area
- Moving Averages plotted on the charts: 21 and 50 (We rarely put averages on the chart just to see the market condition. our main guide is ALWAYS volume).

Risk Management:

- Position Building (Long Trades): NO SL (When building a position, we assume that we will buy the assets in several transactions, most often two or three transactions. The point is that we divide the capital allocated to a given stock into 2-3 parts. We build positions mainly on shares).
- R:R 1/3. We set the SL and want to achieve a return on risk of 3:1
- If you are trading in leveraged positions, ALWAYS use SL

[CSAN]

LONG: 10.15

NO SL

We divide the capital for this transaction into three parts. I am also considering entering at any convenient time between points 11.38 and 10.15. The target for this trade is around \$15

1st entry: \$10.59 (29.05.2024)

2nd entry: \$10.15 (5.06.2024)

3rd entry: \$9.51 (14.06.2024)

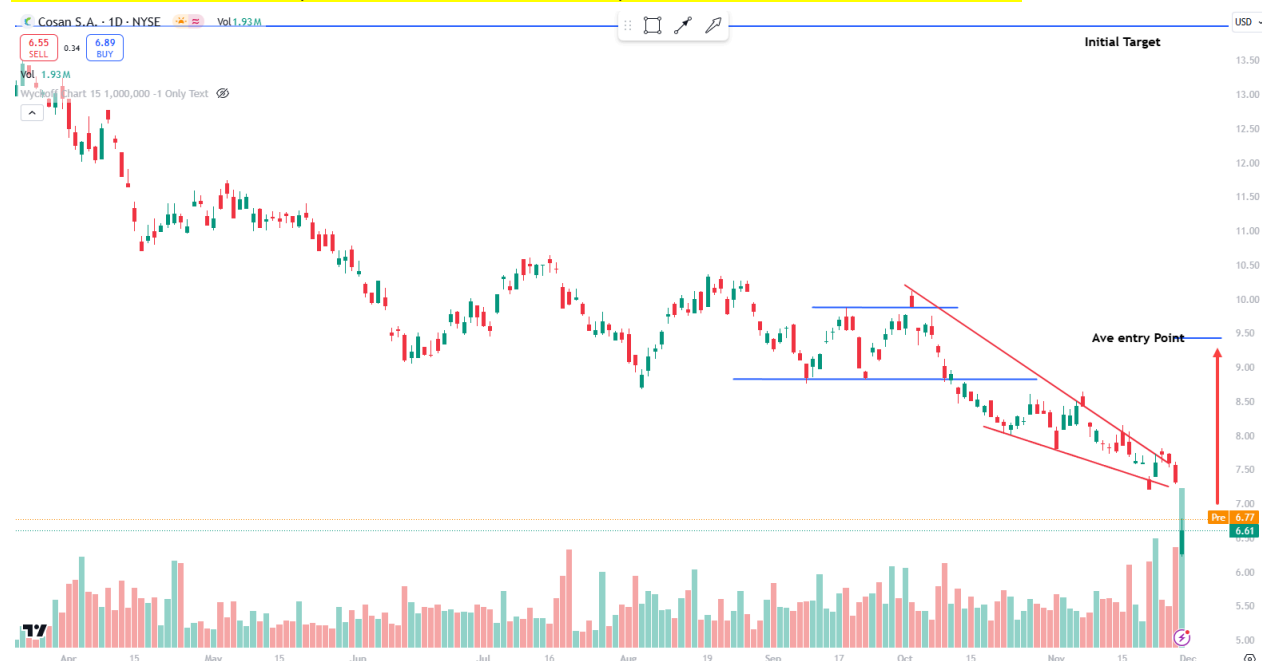
4th entry: \$7.50 (22.11.2024)

Average entry: 9.43

Target: 14:00

*2.12.2024 we have to change the target from 14 to AVE Entry Point: 9.43

Dividend: 06.10.2024, Dividend Yield: 4.49%, Annual Dividend: 0.3469027



Long: [MRNA] 86,16

Initial plan: Entry Zone: 1st Entry 78.07- 75.63; 2nd Entry 62.55

Target: 140 / 160

[22.08.2024] We changed the plan: Entry on today's session opening / ½ of the capital allocated for this trade. Entry: 86.16

[30.08.2024] ¼ of the capital allocated for this trade. Entry: 77.75

[05.09.2024] ¼ of the capital allocated for this trade. Entry: 71.75

1st target: 100

2nd target: 140

3rd target: 160



[KHC]

LONG:

1st entry: 35,67 [04.09.2024]

2nd entry: 33.35 [04.09.2024]

3rd entry: 31.75 [22.11.2024]

Average Price: 33.25

Dividend: 29.11.2024, Cash amount: \$0,40, Declaration date: 30.10.2024

4th dividend this year!

NO STOP LOSS!



Platinum ETF:

PPLT

Long: Friday open price

Target: \$118

1st entry: \$93.24

2nd entry: 86.58

3rd entry: 82.00



[EPM]

Long: today open price

Target: 8.50 or above

SL: 5.45



[Cotton]

Long: Breakout

Still waiting for breakout



[SBUX]

Long: Breakout 101.47

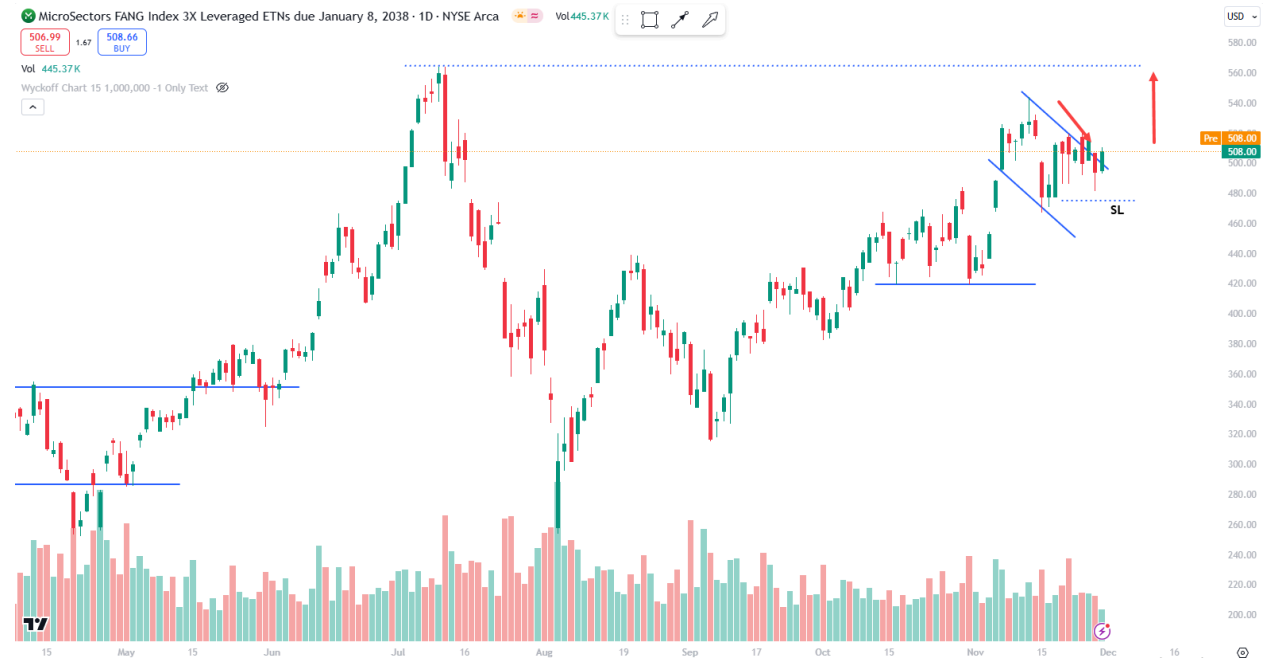
SL: 99.50



ETF [FNGU]:

Long: 515

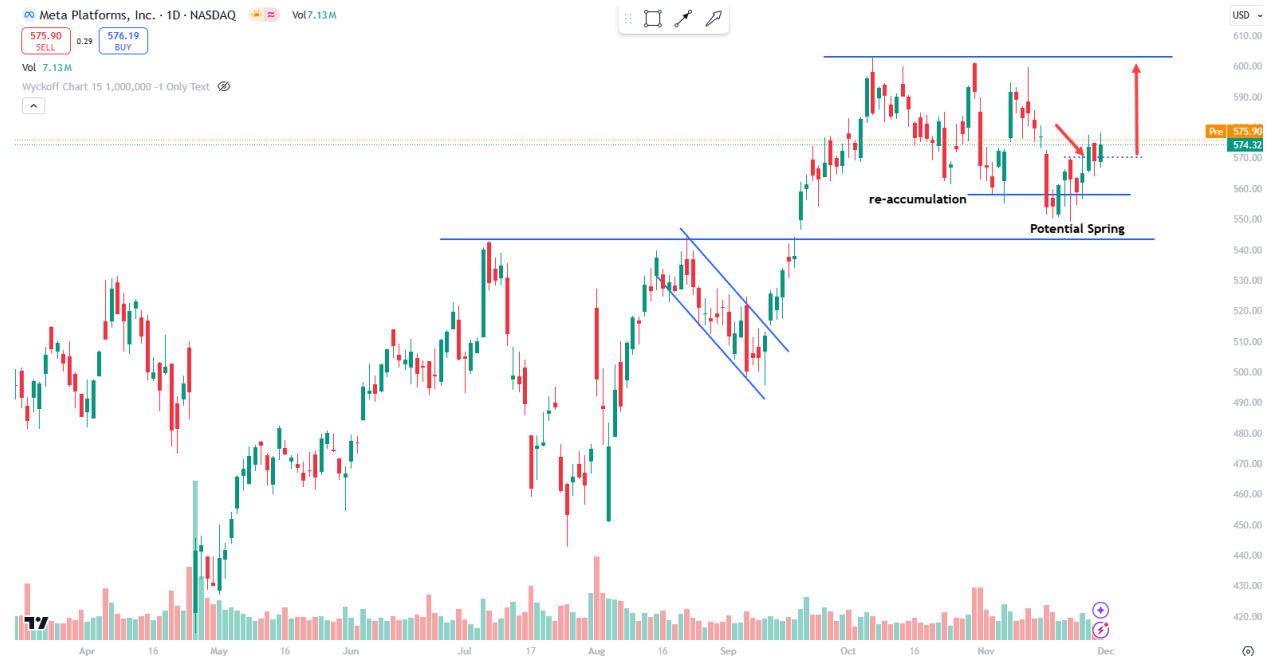
SL: 475



[Meta]

Long: breakout (high volume / 5/15 min chart)

SI: below the spring



Affirm [AFRM]

Long: Breakout 68.50
SL: Tight or on BEP



New Signal:

SNOWFLAKE [SNOW]

1st. PTA Signal we post 26.09.2024

<https://www.skool.com/volumedaytrader/snowflakes-snow-bullish-patterns-buy-signal>

3rd PTA Signal is on our chart

Breakout should be on high volume

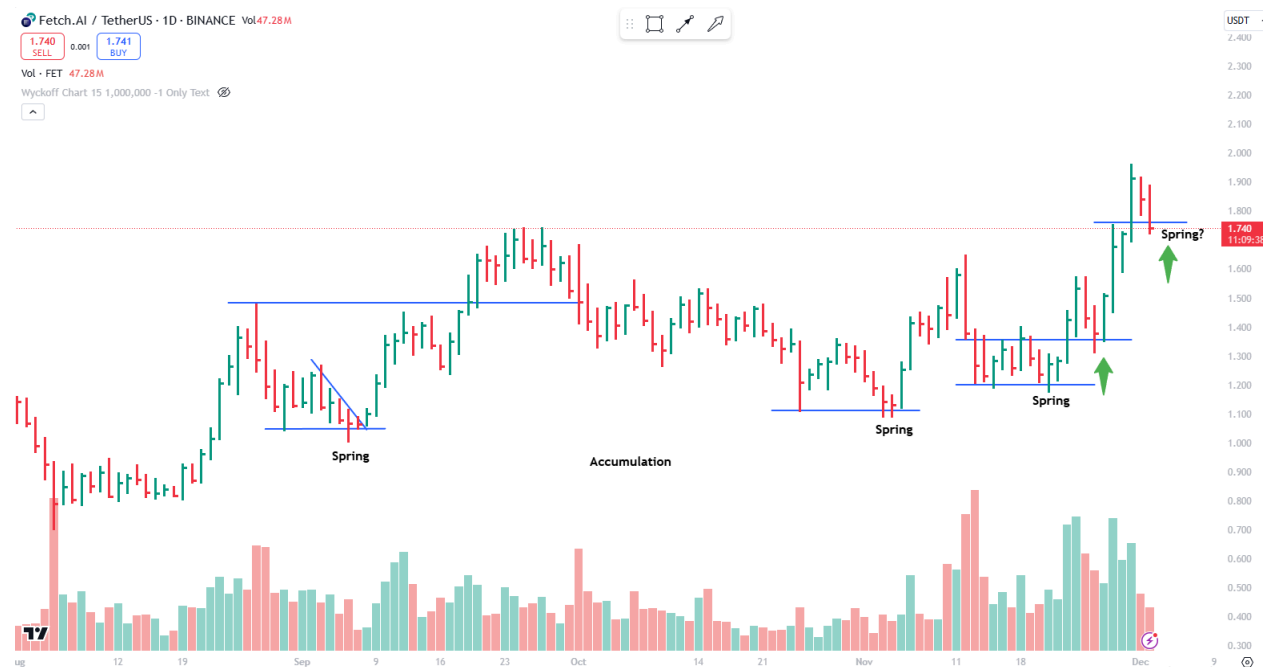


Watchlist:

[FET/USDT]

Possibility of occurrence of spring formation. Please see the daily chart and then 15 min.

On this support some re-accumulation structure with SPRING formation (daily interval or lower) may be drawn





Polish Stocks:

BUMECH [BMC]

Long:

1st entry: 11,54 zł

2nd entry: 10,78zł

3rd entry: 8,12zł

Average Price: 10,14zł

Target:

#1 14.50

#2 15.00

#3 16.20

We have to change the plan for targets. Actually we want to close transaction on BEP point. Additionally, we decided after 3rd entry to secure the position (bad news from the market) and we put the SL order below the October low.

We closed this asset with a loss in today's session!!! We don't see any more chances to go BEP and we need to unfreeze the capital.



[USD/PLN]

Long

2 targets already achieved!

3rd target achieved!

*Hunting for re-accumulation patterns. Monday / Tuesday next week might bring some good patterns



***If signals do not meet the conditions for opening a position, we simply remove them from the watchlist.**

****Video commentary Available on Member's Panel****