

Volume Day Trader Assets for today's session:

CSAN, MRNA, KHC, PPLT, EPM, COTTON, SBUX, FNGU, META, AFRM, SNOW

New Assets for today's session:

No new signal

Watchlist:

FET/USDT

Polish Stocks:

USD/PLN

Remember:

- **PTA - Potential Trading Area**
- **Moving Averages plotted on the charts: 21 and 50 (We rarely put averages on the chart just to see the market condition. our main guide is ALWAYS volume).**

Risk Management:

- **Position Building (Long Trades): NO SL (When building a position, we assume that we will buy the assets in several transactions, most often two or three transactions. The point is that we divide the capital allocated to a given stock into 2-3 parts. We build positions mainly on shares).**
- **R:R 1/3. We set the SL and want to achieve a return on risk of 3:1**
- **If you are trading in leveraged positions, ALWAYS use SL**

[CSAN]

LONG: 10.15

NO SL

We divide the capital for this transaction into three parts. I am also considering entering at any convenient time between points 11.38 and 10.15. The target for this trade is around \$15

1st entry: \$10.59 (29.05.2024)

2nd entry: \$10.15 (5.06.2024)

3rd entry: \$9.51 (14.06.2024)

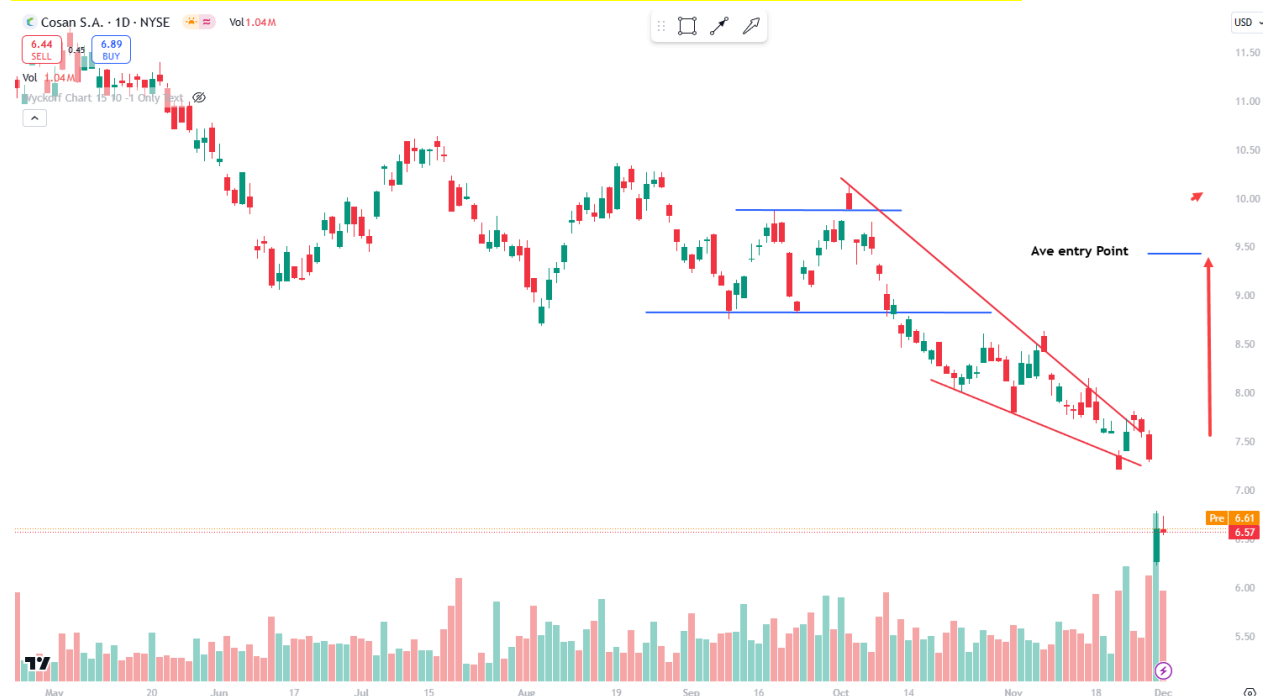
4th entry: \$7.50 (22.11.2024)

Average entry: 9.43

Target: 14:00

***2.12.2024 we have to change the target from 14 to AVE Entry Point: 9.43**

Dividend: 06.10.2024, Dividend Yield: 4.49%, Annual Dividend: 0.3469027



Long: [MRNA] 86,16

Initial plan: Entry Zone: 1st Entry 78.07- 75.63; 2nd Entry 62.55

Target: 140 / 160

[22.08.2024] We changed the plan: Entry on today's session opening / ½ of the capital allocated for this trade. Entry: 86.16

[30.08.2024] ¼ of the capital allocated for this trade. Entry: 77.75

[05.09.2024] ¼ of the capital allocated for this trade. Entry: 71.75

1st target: 100

2nd target: 140

3rd target: 160

This Asset is getting stronger and stronger!!!

BAG HOLDING PATTERNS in Background!



[KHC]

LONG:

1st entry: 35,67 [04.09.2024]

2nd entry: 33.35 [04.09.2024]

3rd entry: 31.75 [22.11.2024]

Average Price: 33.25

Dividend: 29.11.2024, Cash amount: \$0,40, Declaration date: 30.10.2024

4th dividend this year!

NO STOP LOSS!



Platinum ETF:

[PPLT]

Long: Friday open price

Target: \$118

1st entry: \$93.24

2nd entry: 86.58

3rd entry: 82.00



[EPM]

Long: today open price

Target: 8.50 or above

SL: 5.45



Cotton

Long: Breakout

Still waiting for breakout



[SBUX]

Long: Breakout 101.47

SL: 99.50

Keep SL tight



ETF [FNGU]:

Long: 515

SL: 475

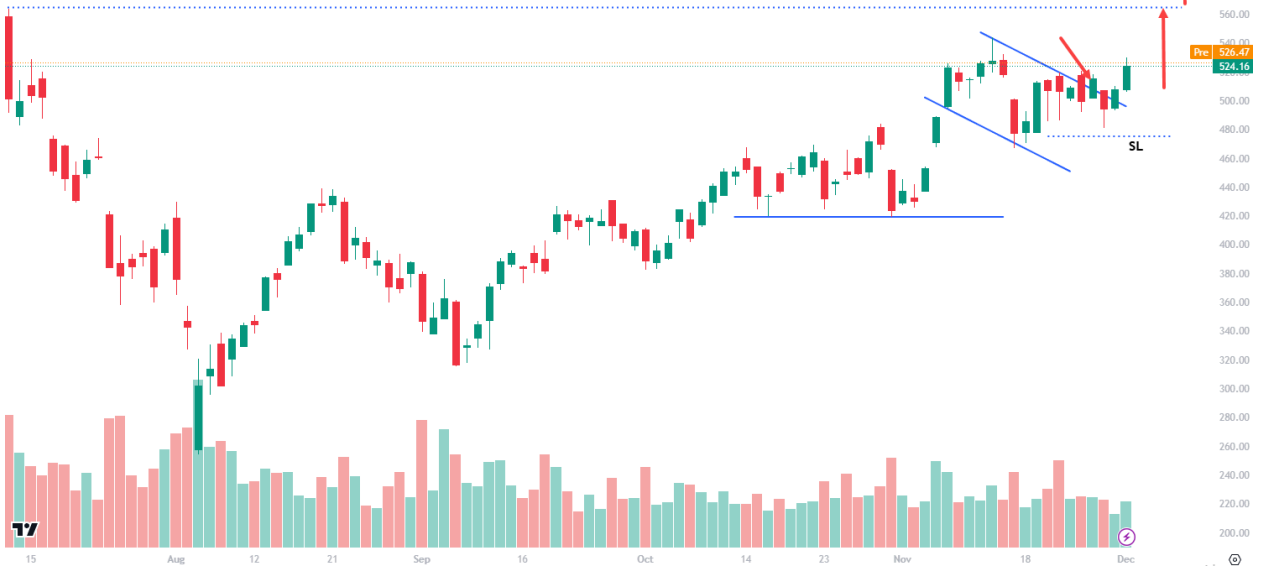
MicroSectors FANG Index 3X Leveraged ETNs due January 8, 2038 · 1D · NYSE Arca Vol 620.8K

525.47 SELL 0.73 526.20 BUY

Vol 620.8K

Wyckoff Chart 15 1,000 -1 Only Text

^



Meta

Long: breakout (high volume / 5/15 min chart)

SI: below the spring

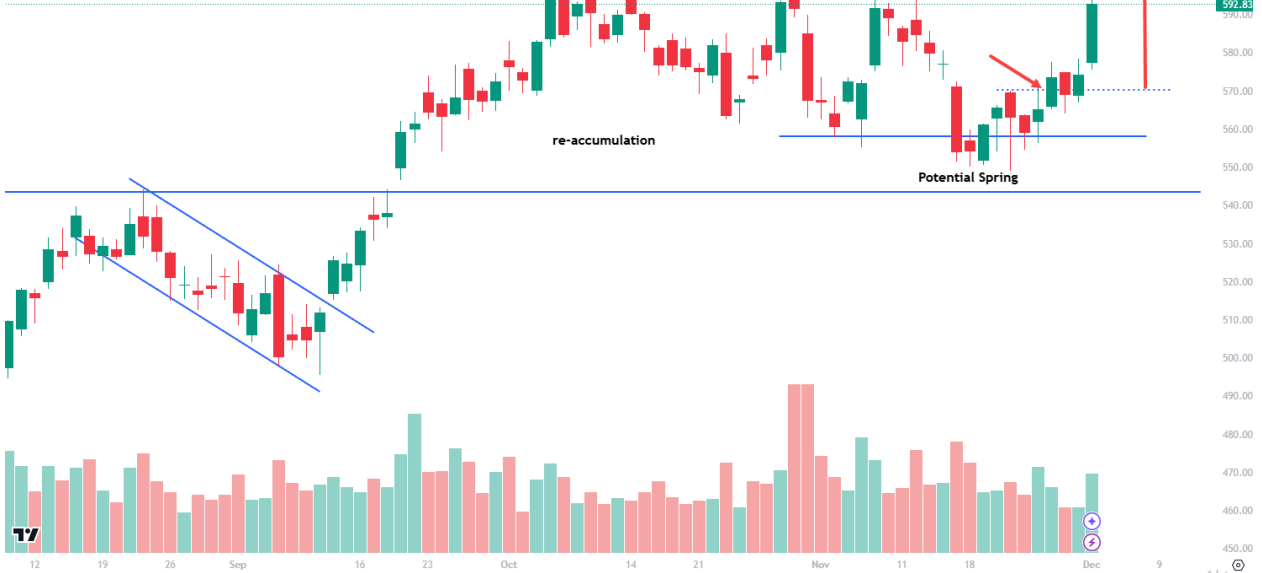
Meta Platforms, Inc. · 1D · NASDAQ Vol 12.52M

594.65 SELL 0.21 594.86 BUY

Vol 12.52M

Wyckoff Chart 15 1,000 -1 Only Text

^



Affirm [AFRM]

Long: Breakout 68.50

SL: Tight or on BEP

IF you put SL on BEP (high open level price suggested strength - SL on BEP was good decision)



SNOWFLAKE [SNOW]

1st. PTA Signal we post 26.09.2024

<https://www.skool.com/volumedaytrader/snowflakes-snow-bullish-patterns-buy-signal>

3rd PTA Signal is on our chart

Breakout should be on high volume

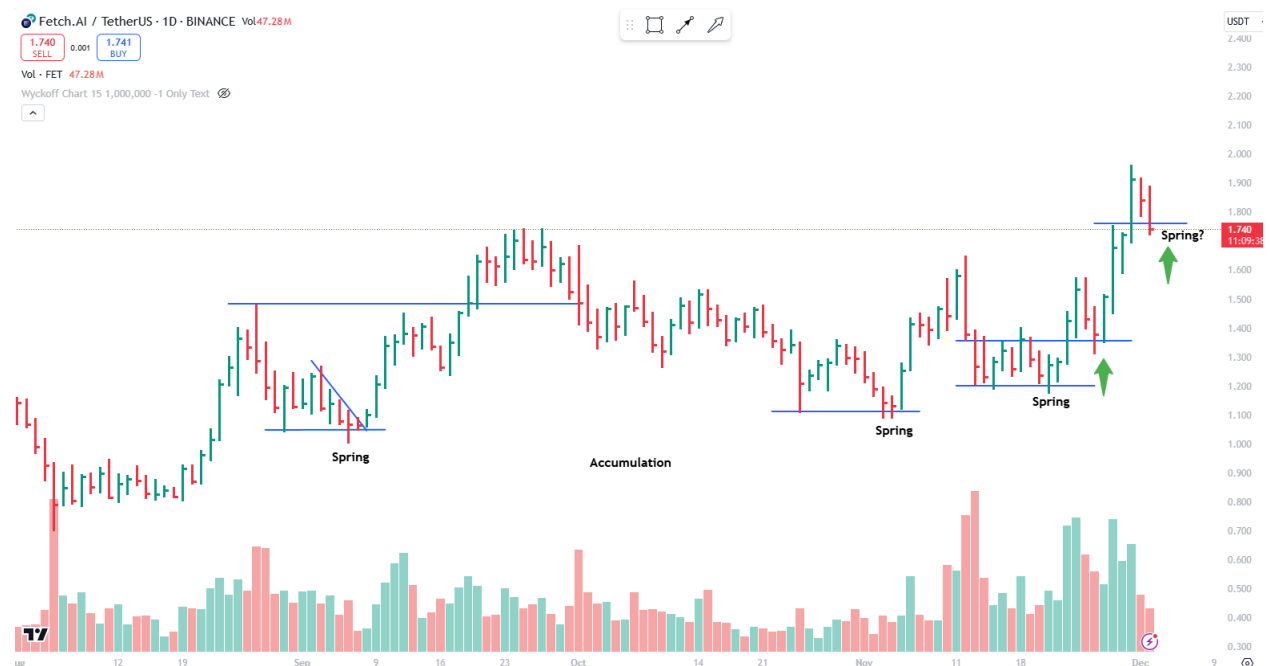
We consider such potential high volume breakout as intraday scalp than larger move bcs since few session trading volume is decreasing. That means the market might also need some “rest” and another good opportunity to anticipate that asset will happen at lower price levels.

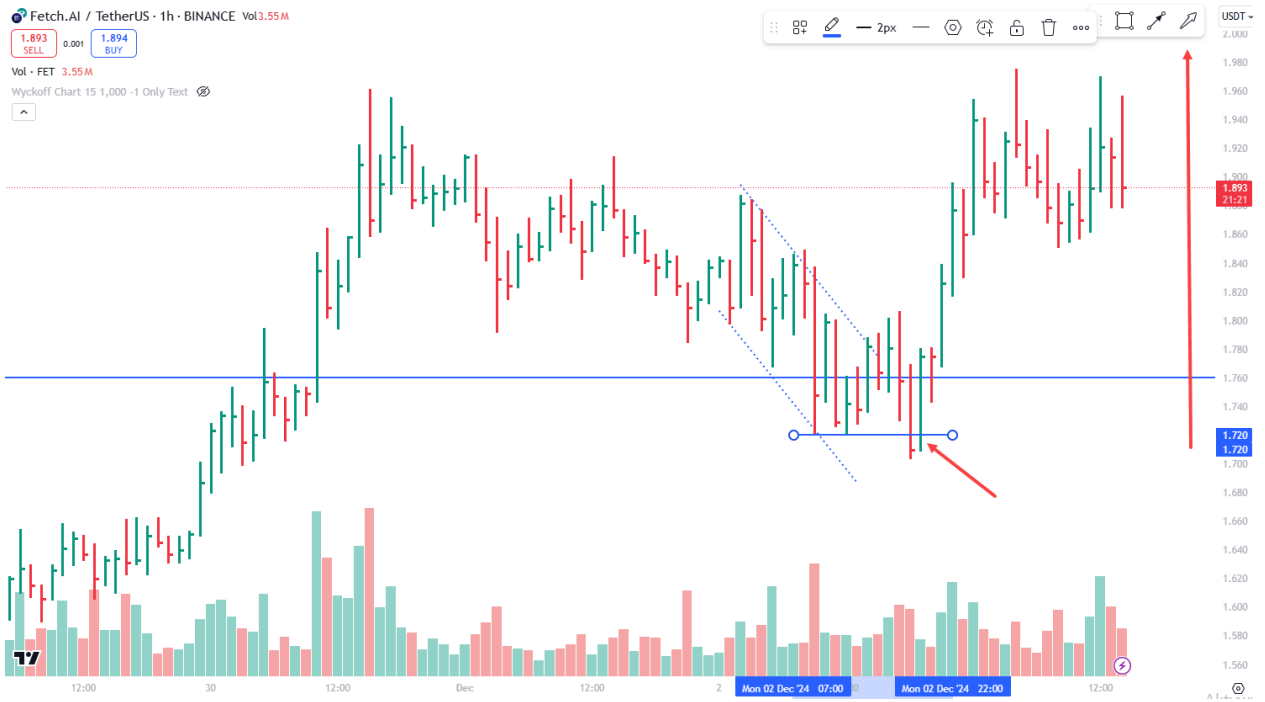


Watchlist:

FET/USDT

As we expected yesterday before session starts - accumulation was drawn on a 15 min chart!





Polish Stocks:

[USD/PLN]

Long

2 targets already achieved!

3rd target achieved!

*Hunting for re-accumulation patterns. Monday / Tuesday next week might bring some good patterns

SL in Place



SI: Should be tight (cant suggest but be be smart trading leverage product)



****If signals do not meet the conditions for opening a position, we simply remove them from the watchlist.***

*****Video commentary Available on Member's Panel*****