

Volume Day Trader Assets for today's session:

CSAN, MRNA, KHC, PPLT, EPM, COTTON, SBUX, FNGU, META, AFRM, SNOW, FET/USDT

New Assets for today's session:

APT, TAO, KOMA, LINK/USDT, TETSU/WRAPPED SOL, MAXI

Watchlist:

DDOG

Polish Stocks:

USD/PLN

Remember:

- **PTA - Potential Trading Area**
- **Moving Averages plotted on the charts: 21 and 50 (We rarely put averages on the chart just to see the market condition. our main guide is ALWAYS volume).**

Risk Management:

- **Position Building (Long Trades): NO SL (When building a position, we assume that we will buy the assets in several transactions, most often two or three transactions. The point is that we divide the capital allocated to a given stock into 2-3 parts. We build positions mainly on shares).**
- **R:R 1/3. We set the SL and want to achieve a return on risk of 3:1**
- **If you are trading in leveraged positions, ALWAYS use SL**

[CSAN]

LONG: 10.15

NO SL

We divide the capital for this transaction into three parts. I am also considering entering at any convenient time between points 11.38 and 10.15. The target for this trade is around \$15

1st entry: \$10.59 (29.05.2024)

2nd entry: \$10.15 (5.06.2024)

3rd entry: \$9.51 (14.06.2024)

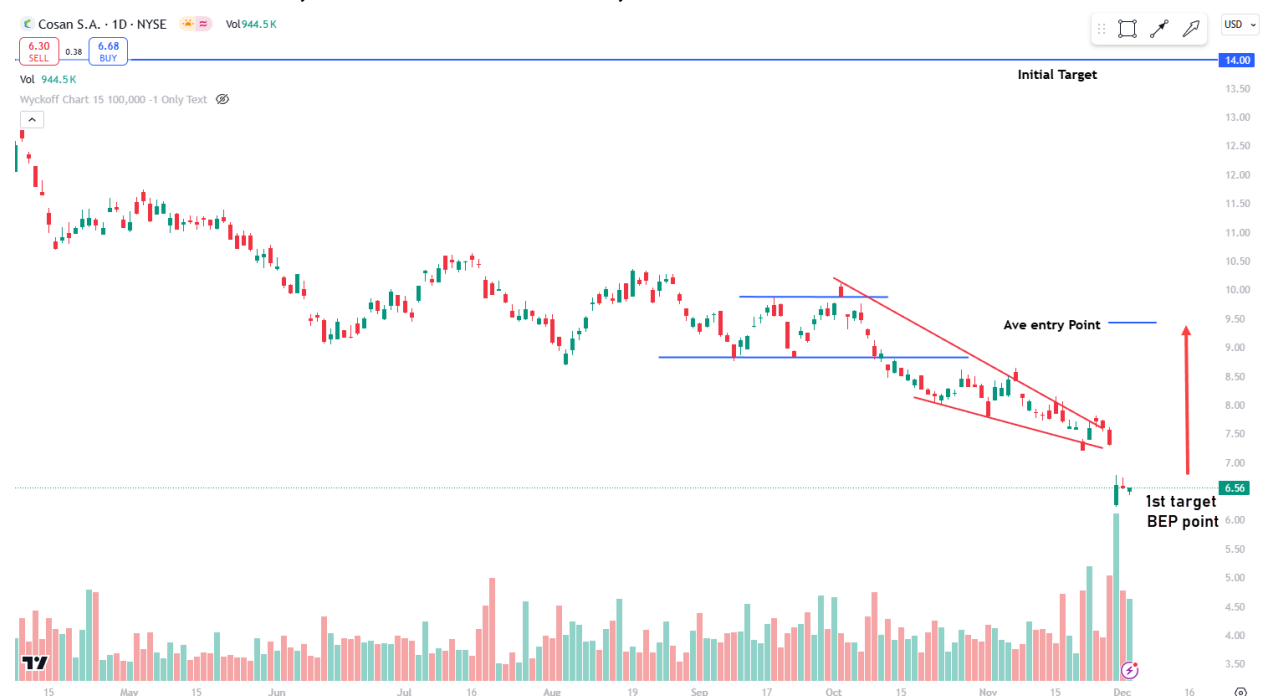
4th entry: \$7.50 (22.11.2024)

Average entry: 9.43

Target: 14:00

***2.12.2024 we have to change the target from 14 to AVE Entry Point: 9.43**

Dividend: 06.10.2024, Dividend Yield: 4.49%, Annual Dividend: 0.3469027



Long: [MRNA] 86,16

Initial plan: Entry Zone: 1st Entry 78.07- 75.63; 2nd Entry 62.55

Target: 140 / 160

[22.08.2024] We changed the plan: Entry on today's session opening / ½ of the capital allocated for this trade. Entry: 86.16

[30.08.2024] ¼ of the capital allocated for this trade. Entry: 77.75

[05.09.2024] ¼ of the capital allocated for this trade. Entry: 71.75

1st target: 100

2nd target: 140

3rd target: 160

This Asset is getting stronger and stronger!!! This chart will explode soon!

BAG HOLDING PATTERNS in Background!



[KHC]

LONG:

1st entry: 35,67 [04.09.2024]

2nd entry: 33.35 [04.09.2024]

3rd entry: 31.75 [22.11.2024]

Average Price: 33.25

Dividend: 29.11.2024, Cash amount: \$0,40, Declaration date: 30.10.2024

4th dividend this year!

NO STOP LOSS!



Platinum ETF:

PPLT

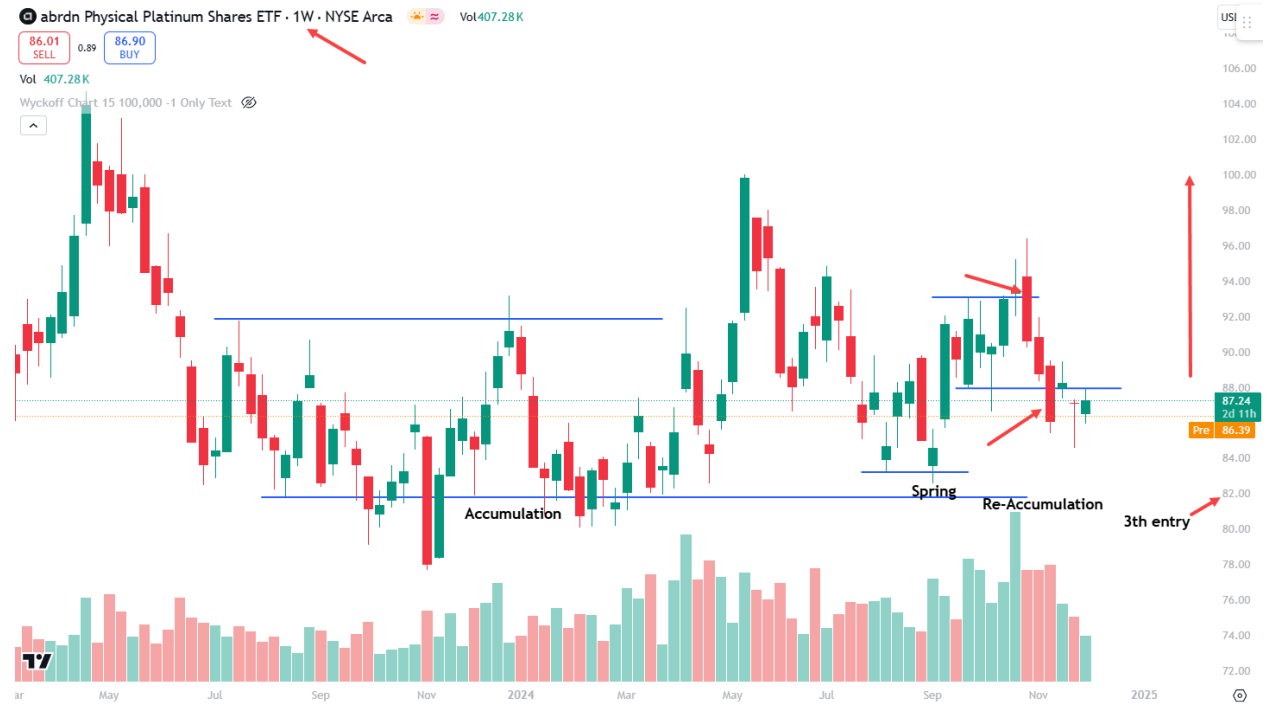
Long: Friday open price

Target: \$118

1st entry: \$93.24

2nd entry: 86.58

3rd entry: 82.00



[EPM]

Long: today open price

Target: 8.50 or above

SL: 5.45



Cotton

Long: Breakout
Still waiting for breakout



[SBUX]

Long: Breakout 101.47
SL: 99.50
Keep SL tight



ETF [FNGU]:

Long: 515

SL: BEP



Meta

Long: breakout (high volume / 5/15 min chart)

SI: 603.19



Affirm [AFRM]

Long: Breakout 68.50
SL: Tight or on BEP



FET/USDT

Long: 1.82

01.12.2024 As we expected yesterday before session starts - accumulation was drawn on a 15 min chart!

02.12.2024 Spring happened on 15 min chart as we speculate

SL: BEP or Higher of TP after 2:1 (depends at your greedness)



SNOWFLAKE [SNOW]

1st. PTA Signal we post 26.09.2024

<https://www.skool.com/volumedaytrader/snowflakes-snow-bullish-patterns-buy-signal>

3rd PTA Signal is on our chart

Since the beginning of the session, the market has been rapidly raising prices, ending the session with a breakout on increased volume. Please note that the previous breakout attempts were unsuccessful and the breakout was made at the beginning of the session, after which prices fell below.

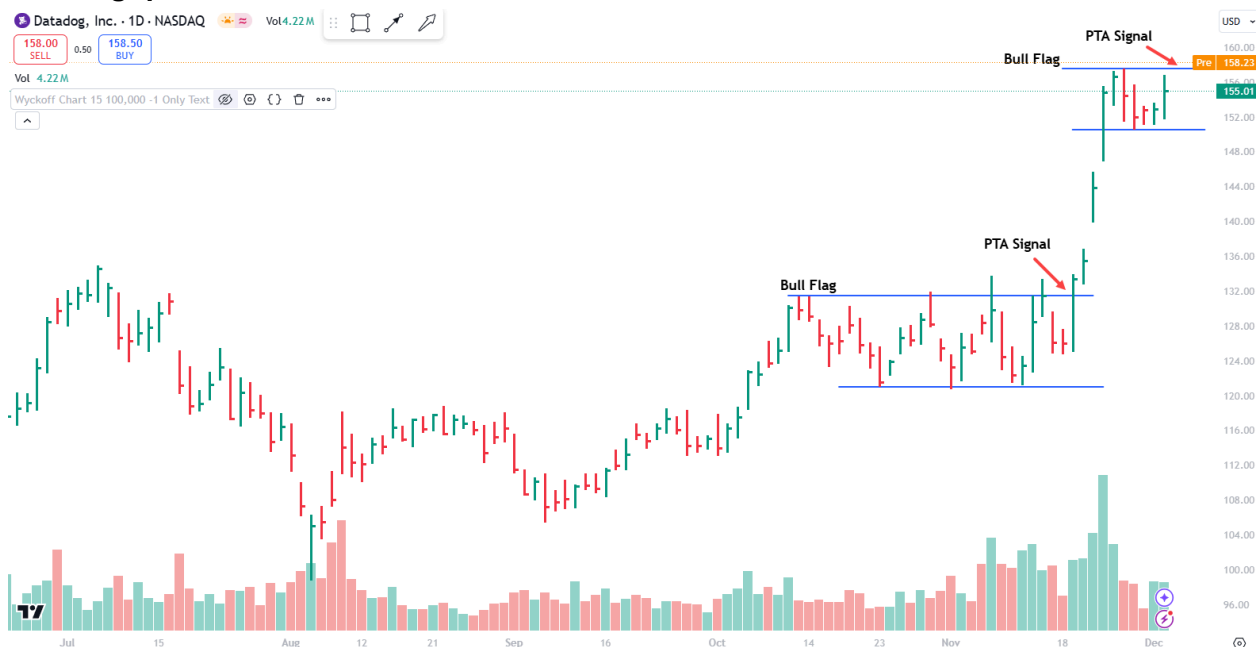
SL: around 170.35 (keep it tight)



Watchlist:

DDOG:

Bull Flag: potential breakout



Crypto:

APT: LONG after yesterday PTA Signal on high volume

SL: below breakout candle



TAO

LONG: Breakout level (accumulation in the background)



KOMA

LONG: BUY when it's go back to again to line

I am putting Small speculation capital

NO SL



LINK/USDT

Long: BUY when again came back to the support line. Actually we have range game



TETSU/WAPPED SOL

LONG

NO SL



Maximus [MAXI]

LONG: 0,75-0,81 zone

SL: Below Spring



Polish Stocks:

[USD/PLN]

Long

2 targets already achieved!

3rd target achieved!

- SL in Place

We will know the market's answer in a moment. A breakout below will not cause us to open a SHORT transaction.

We have an upward movement, a strong trend, behind us. Therefore, a breakout below this system will not be a signal for us. In such a system, we are waiting for a breakout above.

It should be noted that on the left side we have an accumulation with the SPRING formation. However, prices have returned and in my opinion are forming another support. However, I am waiting for a breakout on strong volume

SL: Should be tight (cant suggest but be be smart trading leverage product)



****If signals do not meet the conditions for opening a position, we simply remove them from the watchlist.***

*****Video commentary Available on Member's Panel*****